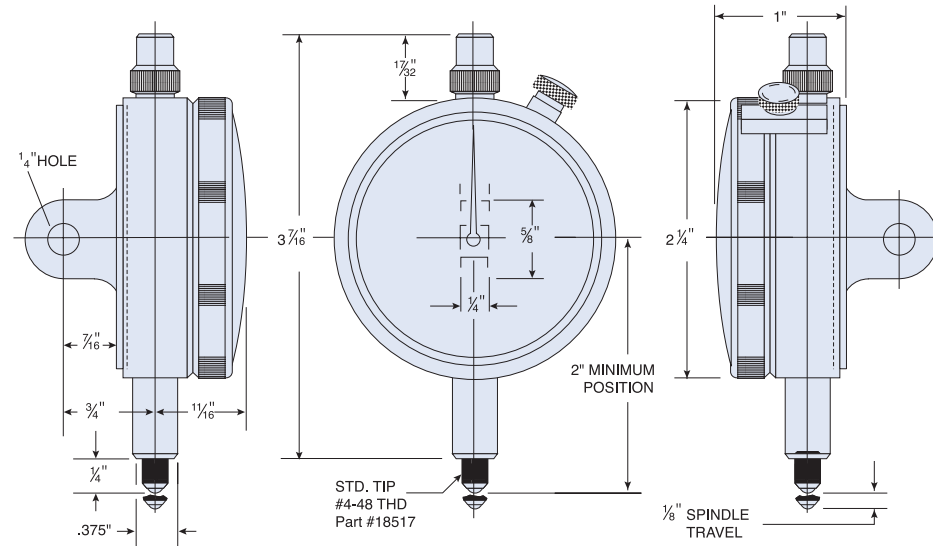


GROUP 2 HIGH AMPLIFICATION

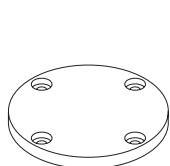
All Dorsey Ultra High Amplification Indicators utilize the lever principle of motion. They do not rely on rack and pinion motion. This eliminates the inherent error between the meshing of racks and gears.

FEATURES:

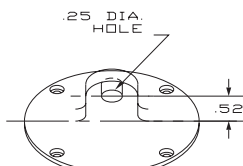
- ✓ Available with ISO 17025 certification.
- ✓ High amplification movement - graduations as low as .00005". Improves readability and minimizes judgement error.
- ✓ Lever principle of amplification - minimizes effect of spindle sideshake. Linearity and repeatability maintained through millions of cycles.
- ✓ 2.25" Bezel - fits many existing fixtures. Conforms to ANSI/AGD standards.
- ✓ Low gaging force - standard is 3 oz.
- ✓ Chrome plated hardened steel stem is designed for clamping. It is virtually crush proof.
- ✓ Bezel zero adjustment - ensures positive lock.
- ✓ Straight through spindle - permits installation of top mounted accessories and options.
- ✓ Shaded dials to facilitate production gaging.



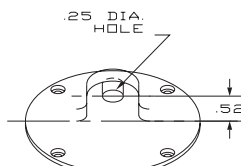
Indicator back options for High Amplification Group 2



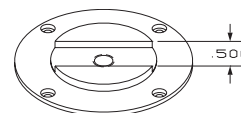
Flat
Part# 49262



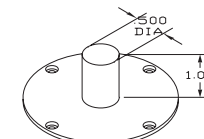
Lugback
Part# 49261



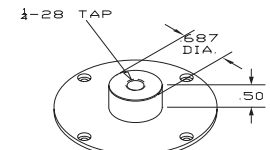
Offset Lugback
Part# 49260



Slideback
Part# 49259



Postback
Part# 49289



Screwback
Part# 49230

See page 14 for dial face options, page 15 for accessories and contacts