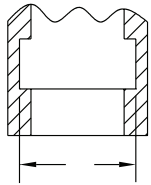
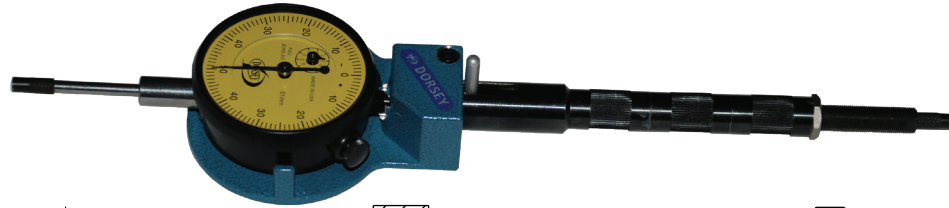


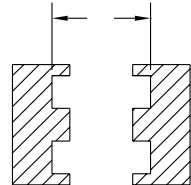
## RETRACTABLE PIN GAGES

Adjustable inside diameter pin gages are used to check straight bores, grooves, spherical radii, and spline and gear pitch diameters. A variety of interchangeable threaded contacts allows the gage to be altered to suit the application. The gage utilizes the principle and portability of an inside diameter micrometer with the accuracy, speed, and total retraction of the dial indicator range. The displays can be balanced, continuous dial, or digital indicators.

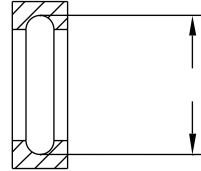
### TYPICAL APPLICATIONS



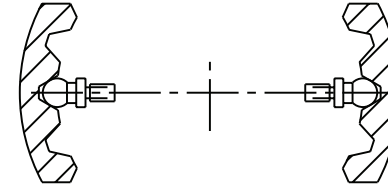
Bore



Groove Diameter



Ball Race Radius Grooves



Pitch Diameter of Gears and Splines

## SPECIAL RETRACTABLE PIN AND REST GAGES

Retractable pin gages are specially designed for entry into hard to reach areas and for checking a variety measurement features. These gages require rests to locate on a datum face. In most cases, both the rest and movement require total retraction beyond the range of the readout to enter into recessed areas such as; under flange faces, spool cavities, or within deep grooves. These gages are used to check upper and lower "L" grooves, retaining grooves, and basic angular diameters from the datum surface, spherical radii, and other configurations. Companion part-simulating setting masters are also supplied upon request.

### TYPICAL APPLICATIONS

