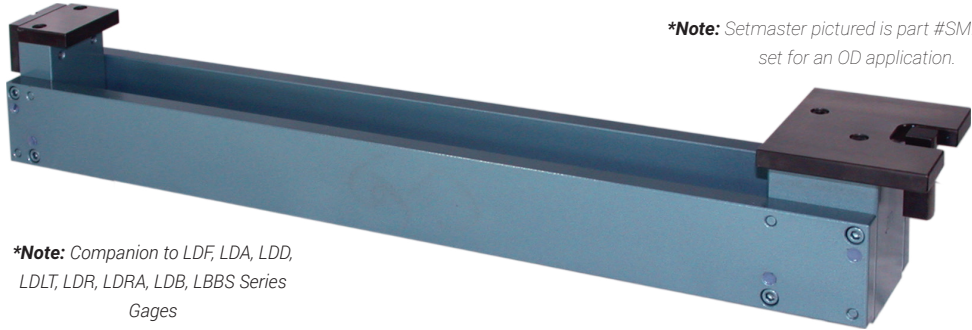


SMF Series setmasters are designed to be used in a production environment where a specific set size is required. These masters use solid steel rails with precision ground end blocks bolted and doweled in place. A hardened steel restrictor is fixed to one side, while the adjustable anvil features .50" of micrometer style fine adjustment. The anvil can be continuously reset within its .5" range for various dimensions or it can be set, sealed, and pinned to a specific size.



**Note: Setmaster pictured is part #SMF-18-GD1 set for an OD application.*

**Note: Companion to LDF, LDA, LDD, LDT, LDR, LDRA, LDB, LBBS Series Gages*

MODEL #	RANGE
SMF-12	0 to 12
SMF-18	12 to 18
SMF-24	18 to 24
SMF-30	24 to 30
SMF-36	30 to 36
SMF-42	36 to 42
SMF-48	42 to 48
SMF-54	48 to 54
SMF-60	54 to 60

SMFC- SERIES SETMASTER



Outtrigger assembly for SMF or SSM series masters.

- ✓ Angular anvil and restrictor set, 1" long for cone or inverted cone.
- ✓ Intermediate rest surfaces.
- ✓ Special anvil and restrictor for gage height more than .5".
- ✓ Roller rest guides for anvil rest plate.
- ✓ Set and sealed to a specific size with NIST traceable certification.
- ✓ **Set, sealed, and pinned to size with ISO 17025 compliant certification.**

VERTICAL SETMASTER STANDS



Part# 4350
(used on SMF)



Part# 4394 (used on SMA)
Part# 4395 (used on SSM)
Up to 36"

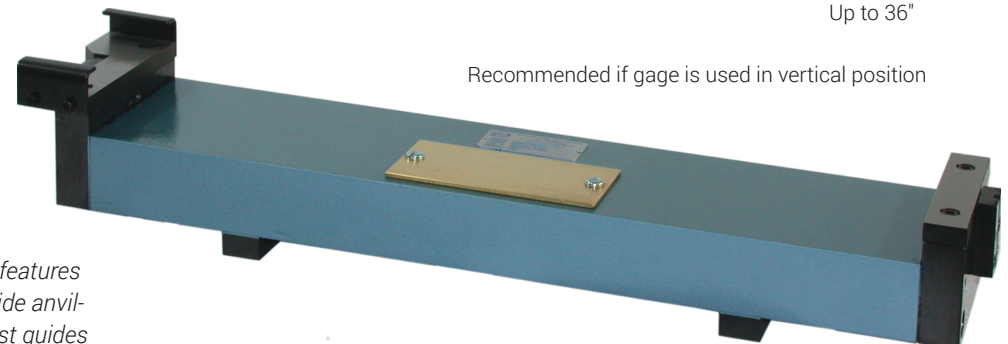
Recommended if gage is used in vertical position

SSM SERIES SOLID FRAME SETMASTER

Solid setmasters are ground to a specific fixed size and are not adjustable. This setmaster is recommended for close tolerances and dedicated gages. The base can be made from tubular or solid steel, cast iron, or aluminum to better match the coefficient of thermal expansion of the part being machined. Anvils made from either hardened steel or carbide are available in a flat and parallel configuration or angular configuration.

Certification options:

- ✓ Set and sealed to a specific size with NIST traceable certification.
- ✓ **Set and sealed to ISO 17025 compliant certification.**



**Note: Setmaster shown features a cast iron bar base, carbide anvil-restrictor set, and roller rest guides*